



ROADRUNNER

ON MCDOWELL





A DISTINCTIVE MARK OF CONTEMPORARY LIVING.

Roadrunner on McDowell was designed and developed using mid-century design as an inspiration. From the moment you see Roadrunner on McDowell, you'll know you've found a distinct, one-of-a-kind community. The community is filled with nods to the past with breeze walls, travertine flooring, a Vespa, and an Airstream® all while providing a luxury living experience for our residents. This is a community where creativity, comfort, and luxury come together in the scenic city of Scottsdale, where the backdrop to an active lifestyle offers remarkable views and beckoning landscapes, work-life-convenience and boundless cultural amenities.

INTERIORS

ZENITH

Roadrunner on McDowell brings mid-century to contemporary living and the Zenith design scheme achieves this perfectly. High-gloss white cabinets are throughout the kitchen and combined with grey quartz counters. The backsplash design, color, and tile is a nod to mid-century design. With hand-scrapped plank oak flooring in the common spaces and comfortable carpet in the bedrooms, Zenith brings the past to the present. The woodgrain bathroom cabinets and white quartz counters contrast the kitchen all while keeping sleek elegance. Each apartment home will have beautiful stainless steel appliances. Residents will be in awe of attention to detail in bringing mid-century design and color to life at our modern, luxury community.

Roadrunner's interior features will be similar, but not exact.







CAMEO

Cameo, the more modern of the two design schemes, features high-gloss white upper cabinets, paired with woodgrain lower cabinets, and a unique hex tile backsplash. Cameo has hand-scraped plank oak flooring throughout the common spaces and lush carpet in the bedrooms. The neutral color selections for Cameo will compliment any interior design style. In the bathroom, the high-gloss white cabinets are complimented by a grey quartz countertop. Every apartment home will have stainless steel Whirlpool appliances, including a side-by-side refrigerator. From the distinct selection of the high-gloss cabinets, to the drawer pulls, Cameo brings out the best in mid-century design.

Roadrunner's interior features will be similar, but not exact.

INTERIORS



COMMUNITY AMENITIES



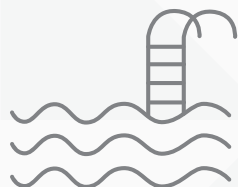
Private one car garage with electrical charging (under & detached options)*



2,500 sq. ft. coworking work-from-home offices with private offices



Terrace deck outdoor lounge with TVs and scenic views of the mountains and city



Resort style swimming pool with cabanas and separate lap pool



Business center with WiFi™ access



Direct access to Papago Park and The Cross Cut Canal Trail System



Fitness center with Technogym® equipment & yoga room



Two pet parks and spa

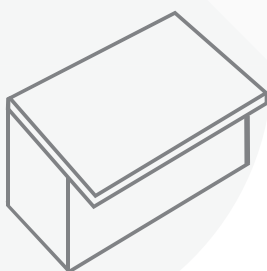


EV charging stations



Smoke free

INTERIOR FEATURES



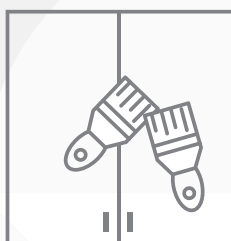
Quartz counter-
tops in kitchen
and bath



Walk-in closet
with custom
wood shelving



Wine rack*



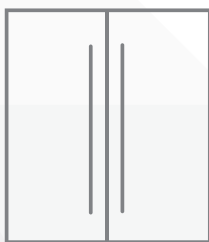
Two designer color
scheme options



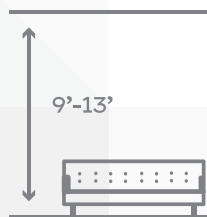
City views*



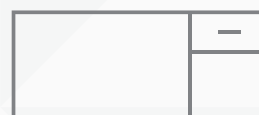
Built-in bookshelf*



Stainless steel,
Energy Star®
appliances



9'-13' ceilings*



Built-in desk*

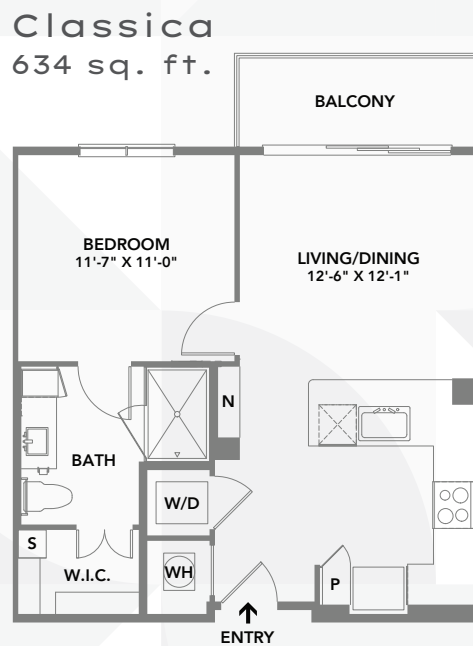
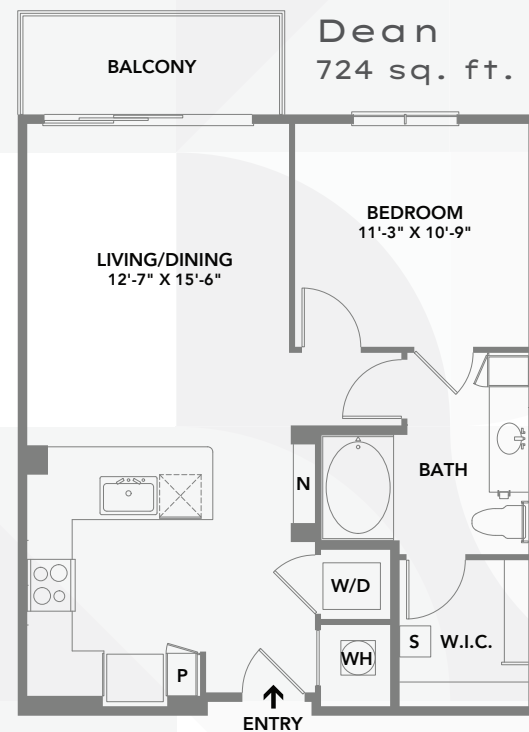
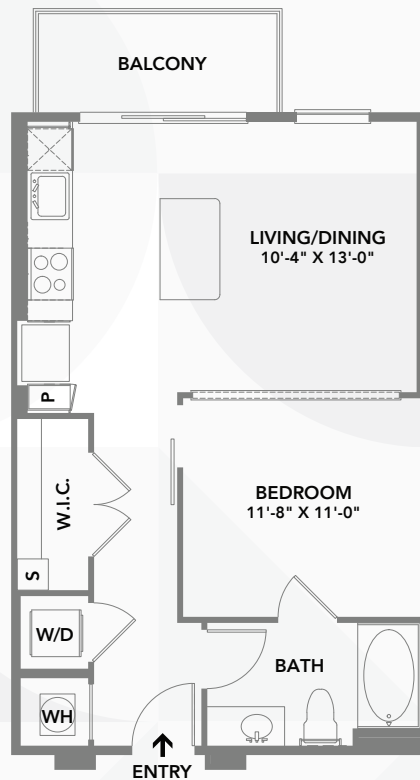


Smart home
package

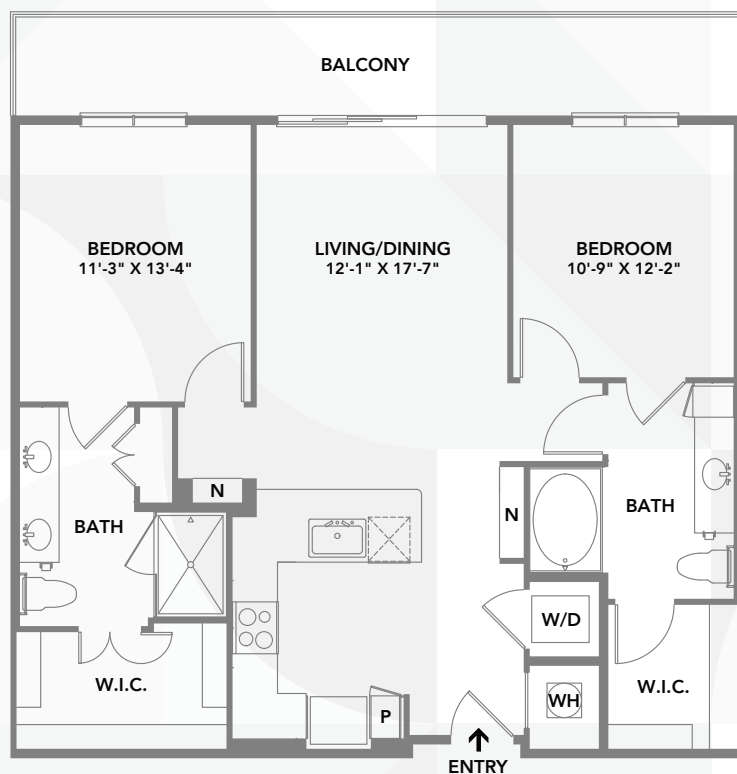
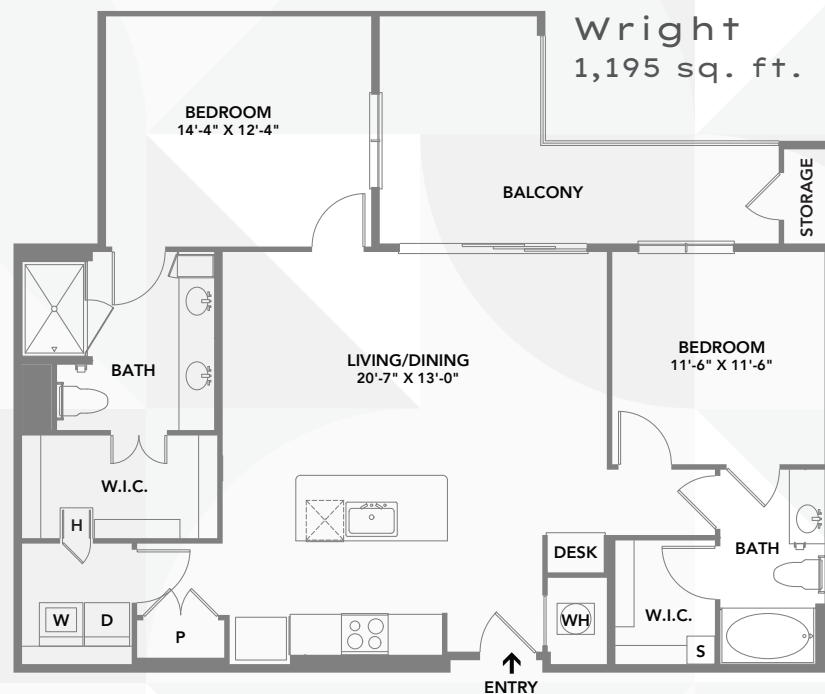
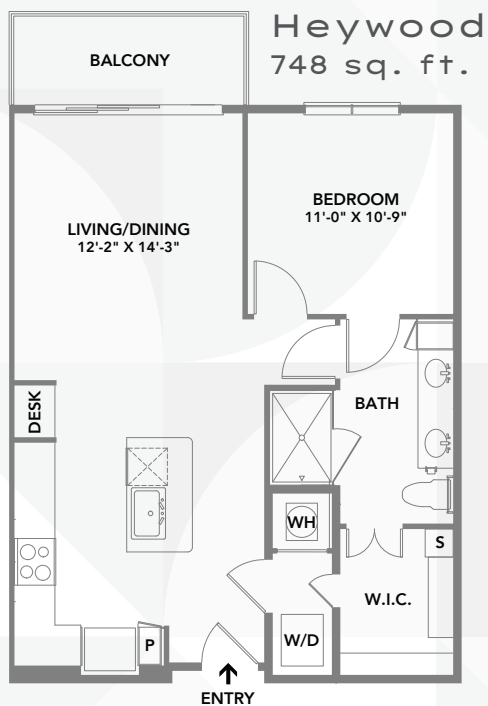
*Select homes

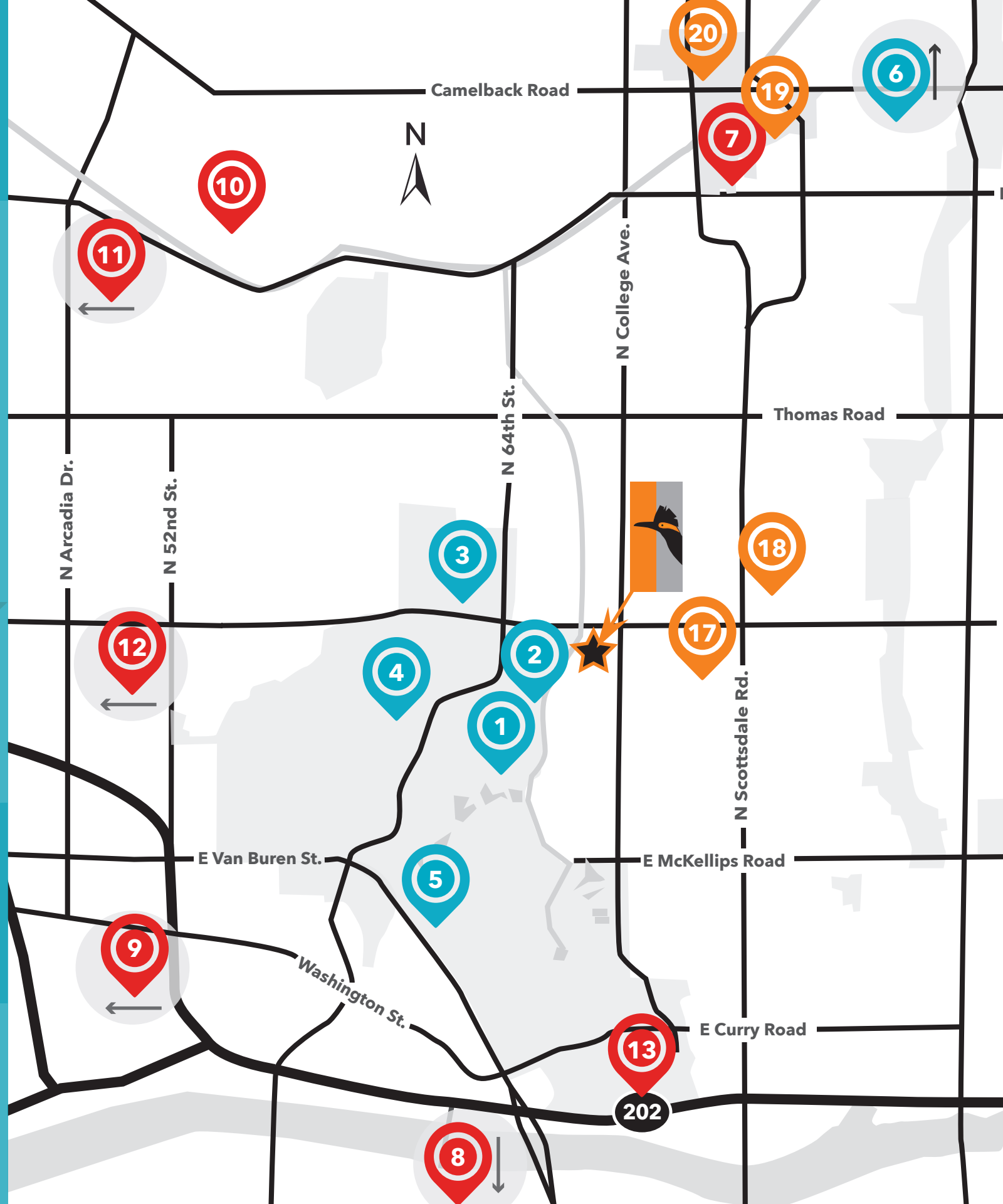
The builder reserves the absolute right, in its sole judgment and discretion, to substitute appliances, materials, fixtures and equipment of equal or greater value for those specified.

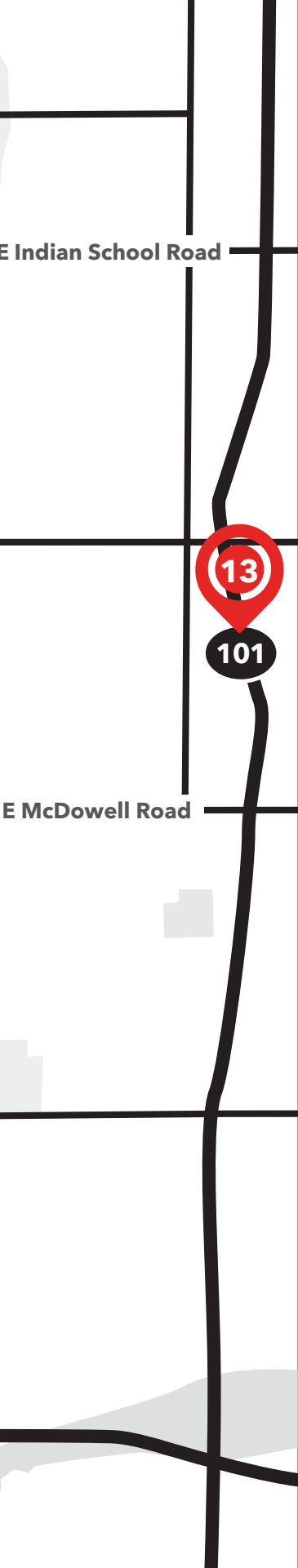
FLOOR PLANS



Not all floorplan options are displayed. See LiveAtRoadrunner.com for available floorplans.







LEGEND



Outdoors:

1. Desert Botanical Garden (Adjacent)
2. Arizona Crosscut Canal Path (Direct Access)
3. San Francisco Giants Spring Training Facility at Papago Baseball Complex
4. Papago Park & Papago Golf Course
5. Phoenix Zoo
6. Indian Bend Wash Greenbelt Park



Accessibility:

7. Old Town Scottsdale
8. Tempe/Tempe Town Lake/ASU
9. Sky Harbor Airport
10. Arcadia
11. Camelback Corridor
12. Downtown Phoenix
13. 101 and 202 Freeways



Restaurants / Shopping:

17. Fate Brewing Company
18. Bitters Cocktail Bar & Food
19. Old Town: The Mission, AZ/88, The Montauk, Farm and Craft, Diego Pops, Ra Sushi, Bandera
20. Fashion Square: Nobu, Tocaya Organica, Francine, Ocean 44, Olive & Ivy



A UNIQUE FLARE FOR AN ACTIVE LIFESTYLE.

Exclusive access to resort-style amenities at Roadrunner on McDowell include a state-of-the-art fitness center, fully-equipped and high-tech remote work center, and a grand and lushly landscaped pool and terrace deck furnished for relaxation. Residents enjoy both striking city views, direct access to the Arizona Canal with 20+ miles of trails, and parks Scottsdale is known for. In both elegance and substance, Roadrunner on McDowell sets the standard for contemporary living.





EQUAL HOUSING
OPPORTUNITY



pet friendly



@LIVEATROADRUNNER

